



Hard Chess Puzzle # 0127

By

G Bud Games
<https://gbud.in>

February 4, 2022

Contents

Hard Chess puzzle # 0127 - Mate in 2 moves	3
Hard chess puzzle 0127	3
Solution to hard chess puzzle 0127	4
Solution 1	4
Right moves for the solution to the hard chess puzzle 0127	6
Explanation for the moves	6
Categories of hard chess puzzle 0127	7
hard chess puzzle 0127 chart	7
How to view the solution to hard chess puzzle 0127	9
How to get help for moves in the hard chess puzzle 0127	10
Play chess for free	11

List of Figures

1	Solve this hard chess puzzle 0127. Mate in 2 moves @ https://gbud.in/gn94hz3	3
2	Solve this hard chess puzzle online with solution @ https://gbud.in/gn94hz3	3
3	Initial board position of hard chess puzzle 0127	4
4	Bxc3	5
5	a7	5
6	h1=Q#	6
7	hard chess puzzle 127 chart 1	7
8	hard chess puzzle 127 chart 2	8
9	hard chess puzzle 127 chart 3	8
10	hard chess puzzle 127 chart 4	9
11	Click the solution button to view solutions @ https://gbud.in/gn94hz3	9
12	Click the help button to get help on next move @ https://gbud.in/gn94hz3	10
13	Solve more hard puzzles @ https://gbud.in/chshdpz	10
14	Solve other puzzles @ https://gbud.in/chsgppz	10
15	Play chess online for free. Solve puzzles and play with friends	11
16	Solve this puzzle online by scanning this QR code or go to the link below	12

Hard Chess puzzle # 0127 - Mate in 2 moves

Solve this hard chess puzzle and improve your chess games through improvement of your chess strategies and chess tactics. This hard puzzle is a subset of [kids games](#).

Puzzle No : 0127

Difficulty level : hard

Description : Mate in 2 moves

Next Move : Black

Player level : Advanced

Short URL for puzzle : <https://gbud.in/gn94hz3>

Hard chess puzzle 0127

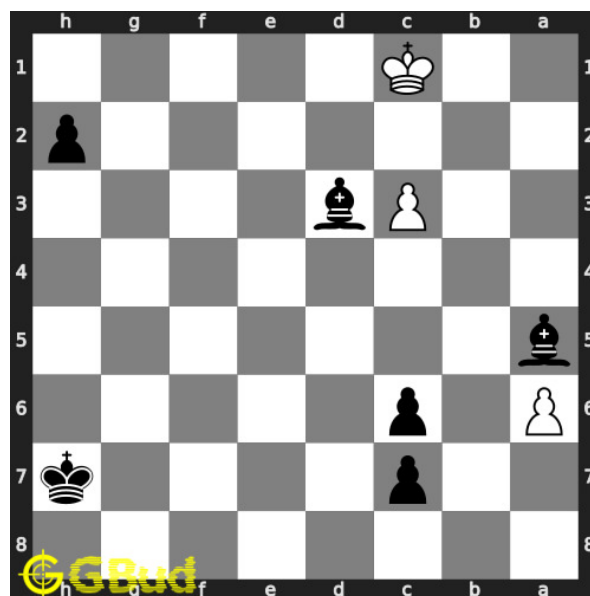


Figure 1: Solve this hard chess puzzle 0127. Mate in 2 moves @ <https://gbud.in/gn94hz3>



Figure 2: Solve this hard chess puzzle online with solution @ <https://gbud.in/gn94hz3>

Dont forget to check out [chess puzzles](#), [easy chess puzzles](#), [medium chess puzzles](#), [hard chess puzzles](#) and [chess puzzles collections](#) .

Solution to hard chess puzzle 0127

At this puzzle, next [move](#) is by [Black](#). The objective of the puzzle is to mate in 2 moves.

See the interactive solution at the [puzzle page](#)

Solution 1

Initial board position This is the initial board position of hard chess puzzle 0127.

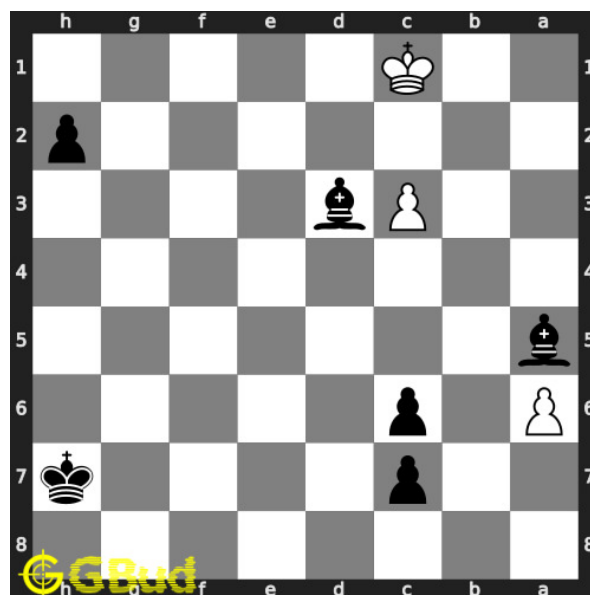


Figure 3: Initial board position of hard chess puzzle 0127

Move 1 Move by black

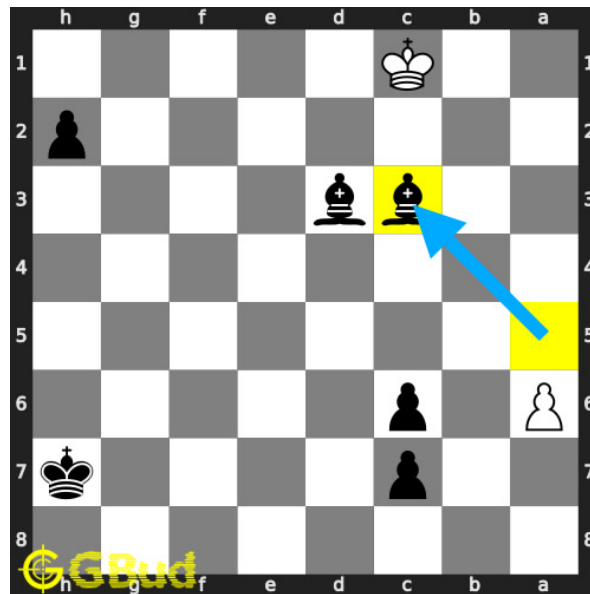


Figure 4: Bxc3

your **bishop captures** opponents **pawn**. this **move** also restricts the opponent's king's access to **d2** and **b2**.

Move 2 Move by white

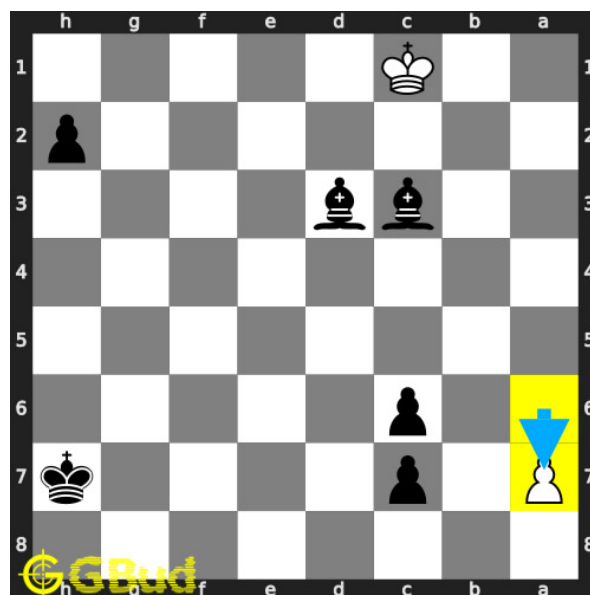


Figure 5: a7

opponent is trying to promote their **pawn**.

Move 3 Move by black

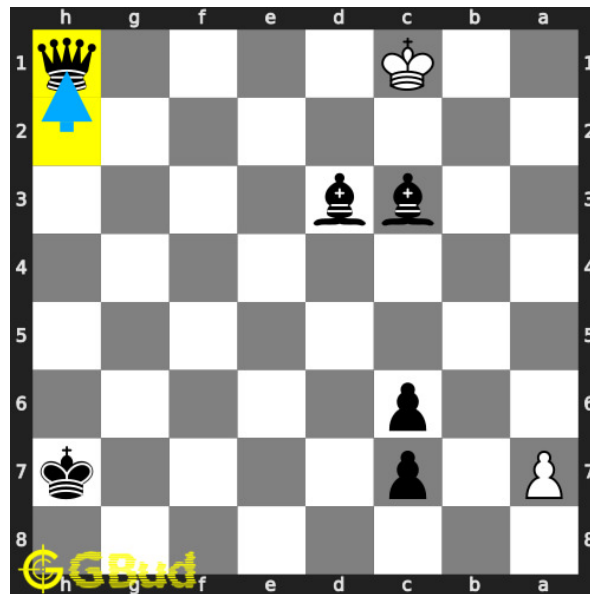


Figure 6: h1=Q#

pawn in h file is promoted to a queen and checkmate. opponent's king can't come to second rank due to the attack from your bishops. this is how you can mate in 2 moves.

Right moves for the solution to the hard chess puzzle 0127

Based on the objective of the puzzle, you have to make the right moves. Following are the right moves

1. Bxc3, h1=Q#

Explanation for the moves

1. Bxc3 - Your bishop captures opponents pawn. This move also restricts the opponent's king's access to d2 and b2.
2. a7 - Opponent is trying to promote their pawn.
3. h1=Q# - Pawn in h file is promoted to a queen and checkmate. Opponent's king can't come to second rank due to the attack from your bishops. This is how you can mate in 2 moves.
4. For right move - You knew the power of promotion. Keep it up
5. For wrong move - You could have promoted the pawn in h file for a checkmate. Do not stop trying

Categories of hard chess puzzle 0127

This hard chess puzzle falls in these categories.

1. [Hard chess puzzles](#)
2. [Mate in 2 puzzles in chess](#)
3. [Endgame puzzles in chess](#)
4. [Promotion puzzles in chess](#)
5. [Strategy puzzles in chess](#)
6. [Pawn puzzles in chess](#)
7. [Queen puzzles in chess](#)
8. [Bishop puzzles in chess](#)

hard chess puzzle 0127 chart

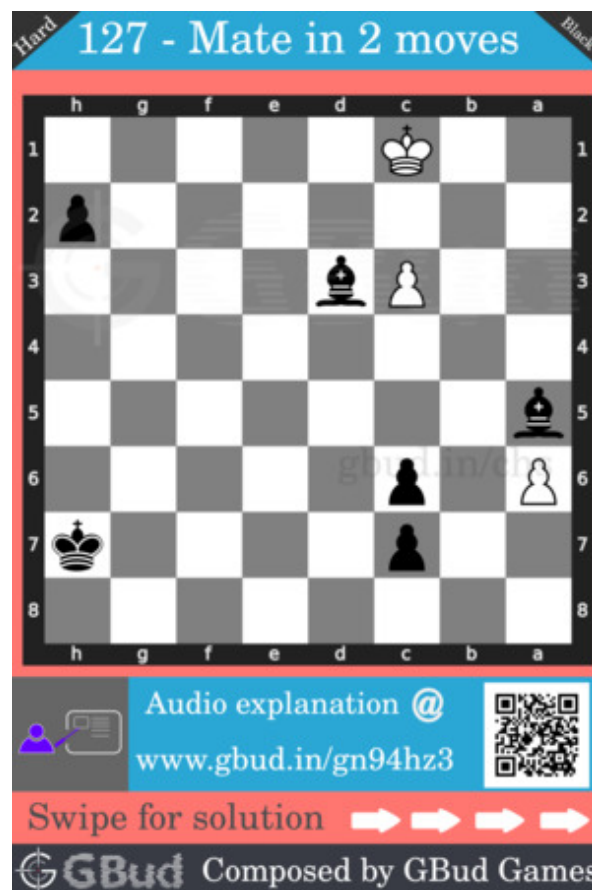


Figure 7: hard chess puzzle 127 chart 1



Figure 8: hard chess puzzle 127 chart 2

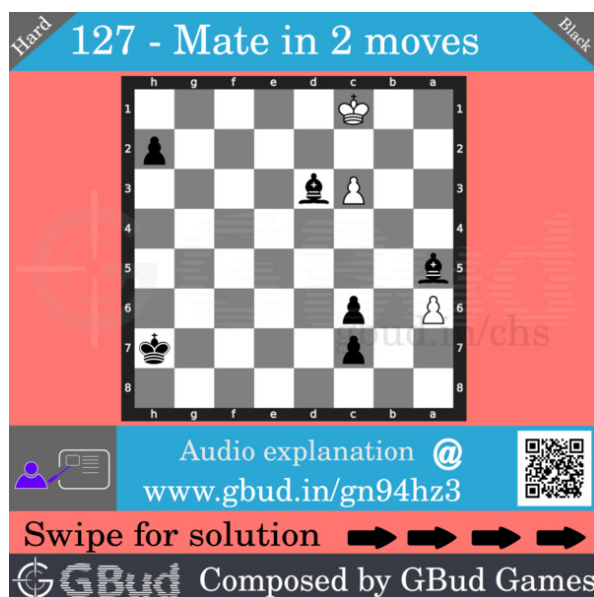


Figure 9: hard chess puzzle 127 chart 3



Figure 10: hard chess puzzle 127 chart 4

How to view the solution to hard chess puzzle 0127

To view the [solution to this puzzle](https://gbud.in/gn94hz3), follow the steps given below

1. Go to the [puzzle page](https://gbud.in/gn94hz3)
2. Click the solution button (Key as shown [below](https://gbud.in/gn94hz3)) to view the solution

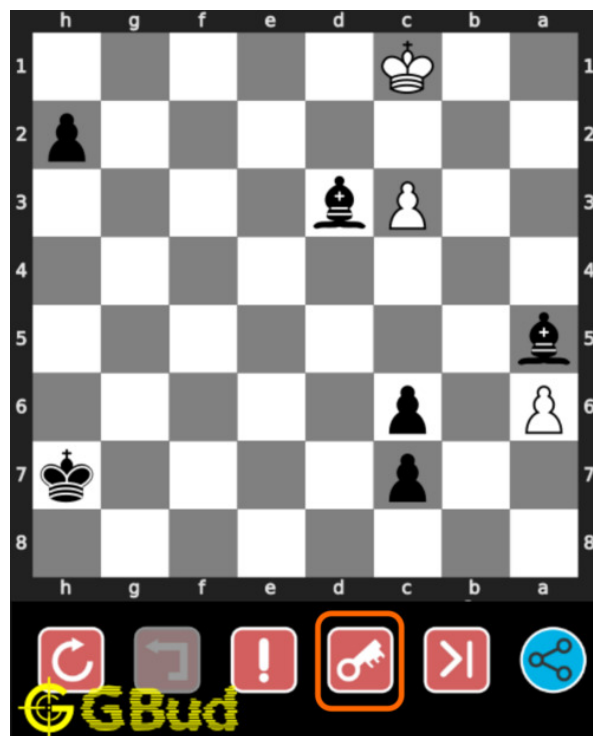


Figure 11: Click the solution button to view solutions @ <https://gbud.in/gn94hz3>

How to get help for moves in the hard chess puzzle 0127

To get help or the possible next moves in the puzzle, , follow the steps given below

1. Go to the [puzzle page](#)
2. Click the help button (exclamation mark as shown [below](#)) to get help or suggestion on next possible [move](#)



Figure 12: Click the help button to get help on next move @ <https://gbud.in/gn94hz3>



Figure 13: Solve more hard puzzles @ <https://gbud.in/chshdpz>



Figure 14: Solve other puzzles @ <https://gbud.in/chsgppz>

Play chess for free

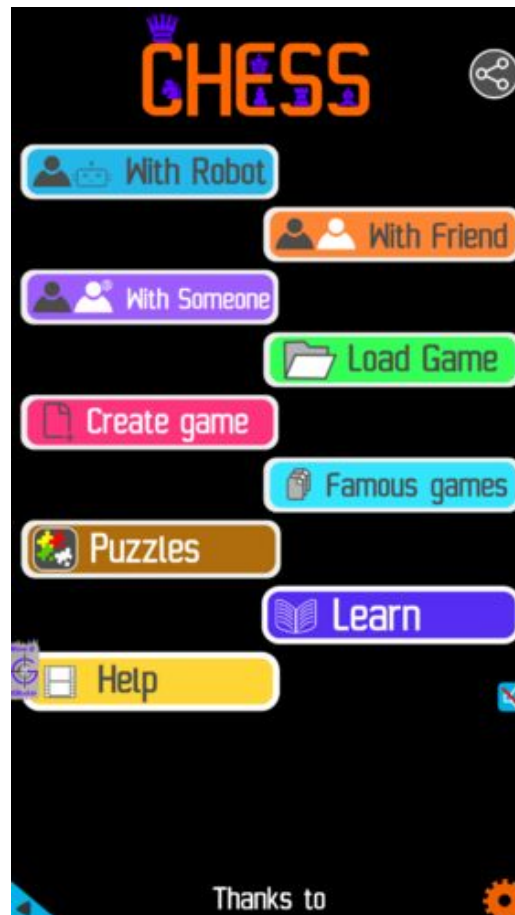


Figure 15: Play chess online for free. Solve puzzles and play with friends

Play chess for free at <https://gbud.in/chs>

We present you a platform to play chess online with friends for free. No need to install any app. You can play chess for free without registration or login.

Simple. You can do several chess related activities.

1. [solve chess puzzles](#)
2. [learn about chess](#)
3. [play chess with computer](#)
4. [play chess with friend](#)
5. [create your own chess games](#)

6. [fen viewer](#)
7. [fen editor](#)
8. [fen generator](#)
9. [pgn viewer](#)
10. [chess board editor](#)
11. [view famous chess games.](#)



Figure 16: Solve this puzzle online by scanning this QR code or go to the link below

<https://gbud.in/gn94hz3>

Read the latest article on Hard Chess puzzle # 0127 - Mate in 2 moves by scanning this QR code or click the link

Previous article : « [Hard Chess puzzle # 0126 - Mate in 4 moves](#)

Next article : [Hard chess puzzles](#) »

[Back to top](#)

[Contact Us](#)